



RESIDE WHERE THE WORLD LIVES

优居于世界之端

PAVILION
DAMANSARA HEIGHTS
KUALA LUMPUR

THE RISE OF A
COSMOPOLIS

国际都市
的崛起

Sited right in the centre of Malaysia's most prestigious address, Pavilion Damansara Heights is set to be the new heartbeat in this affluent neighbourhood.

柏威年白沙罗岭坐落于马来西亚最负盛名的旺地中心，意味着它即将成为此丰裕社区的心脏地带。

The 16-acre freehold integrated development comprising Luxury Residences, Corporate Offices and Lifestyle Mall is a masterpiece in the making, transforming the Kuala Lumpur skyline.

此占地16英亩的永久地契综合发展项目包含豪华住宅、甲级办公大楼以及国际顶级商场，是一个即将改变吉隆坡景观的杰出佳作。



Pavilion Damansara Heights
MRT Station
柏威年白沙罗岭
捷运站

PAVILION

PAVILION
LUXURY
RESIDENCES

ENTRANCE

MAIN ENTRANCE

LIVING ABOVE
A WORLD OF
INDULGENCE

Pavilion Damansara Heights will be home to curated dining,
contemporary retail and customised leisure indulgences.
Living in Pavilion Damansara Heights is living with conveniences,
right on your doorstep.

活出自我，
享受生活

柏威年白沙罗岭将成为融合精致餐饮、
当代购物及特设悠游安逸享受生命之处。
柏威年白沙罗岭是聚集便利所在
的最佳首选居住地点。

PAVILION
LUXURY
RESIDENCES

GARDEN FACILITIES

LEVEL 3A

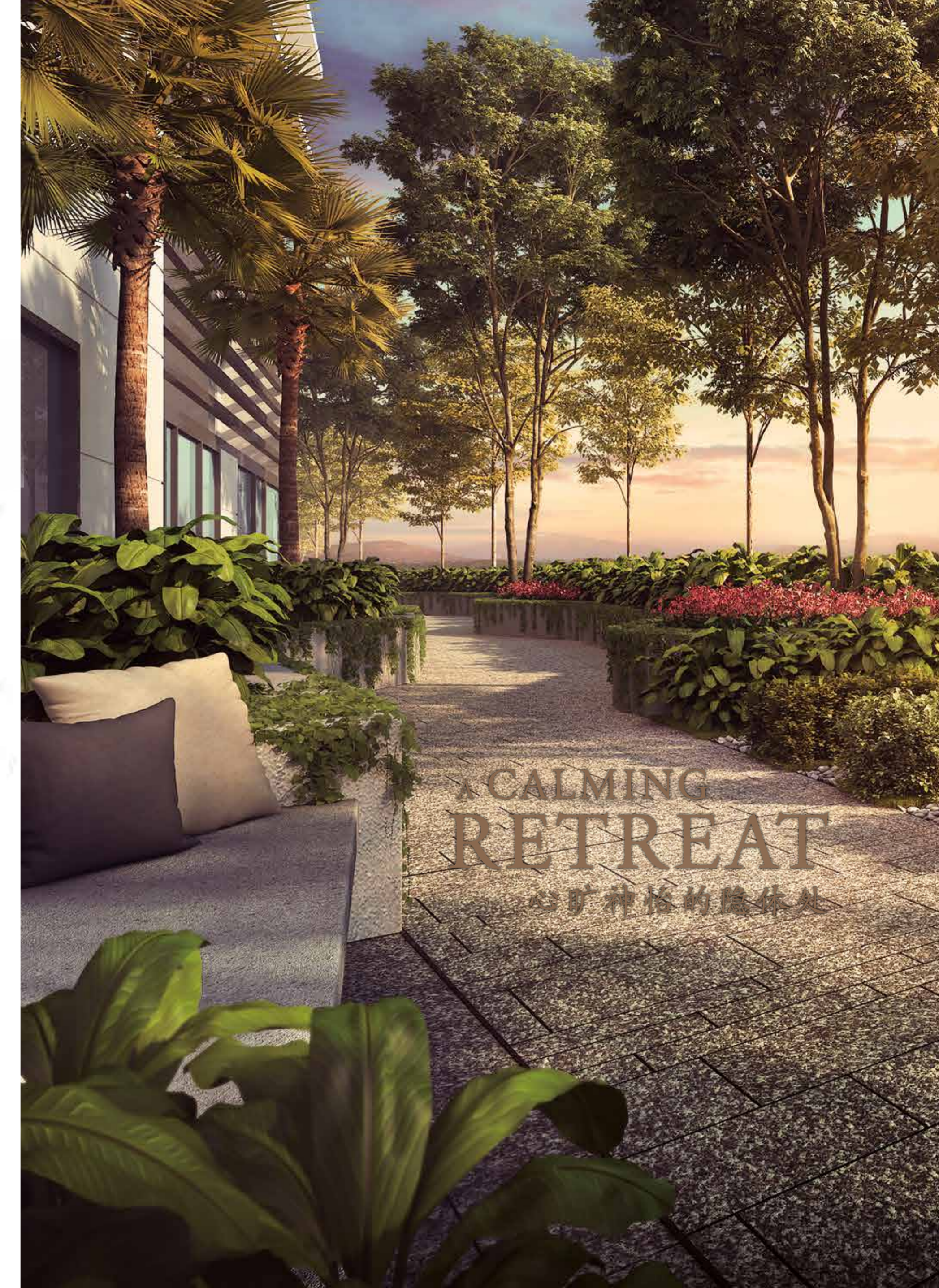
园林设施

3A层



- | | | | |
|-------------------------|-------------------------|---|------------------------|
| 1. Lap Pool | 6. Wellness Trail | 10. Game Room | 15. Day Care |
| 2. Children's Pool | 7. Outdoor Lounge | 11. Pre-function Room | 16. Utility/Laundrette |
| 3. Lounger Deck | 8. Garden Exercise Lawn | 12. Function Room with
Gourmet Kitchen | 17. Changing Room |
| 4. Linear Cascade | 9. Colonnade Pergola | 13. Library | 18. Washroom |
| 5. Children's Play Area | | 14. Grill Kitchen
at the Terrace | 19. Prayer Room |

- | | | | |
|-----------|-----------|---------------------|--------------|
| 1. 露天泳池 | 6. 健康步道 | 10. 游戏室 | 15. 托儿所 |
| 2. 儿童泳池 | 7. 户外休闲区 | 11. 迎宾厅 | 16. 公用设施/洗衣房 |
| 3. 甲板椅休闲区 | 8. 花园运动草坪 | 12. 设有美食厨房
的多功能厅 | 17. 更衣室 |
| 4. 流水水景 | 9. 花架柱廊 | 13. 图书馆 | 18. 洗手间 |
| 5. 儿童游乐区 | | 14. 露台烧烤厨房 | 19. 祈祷室 |

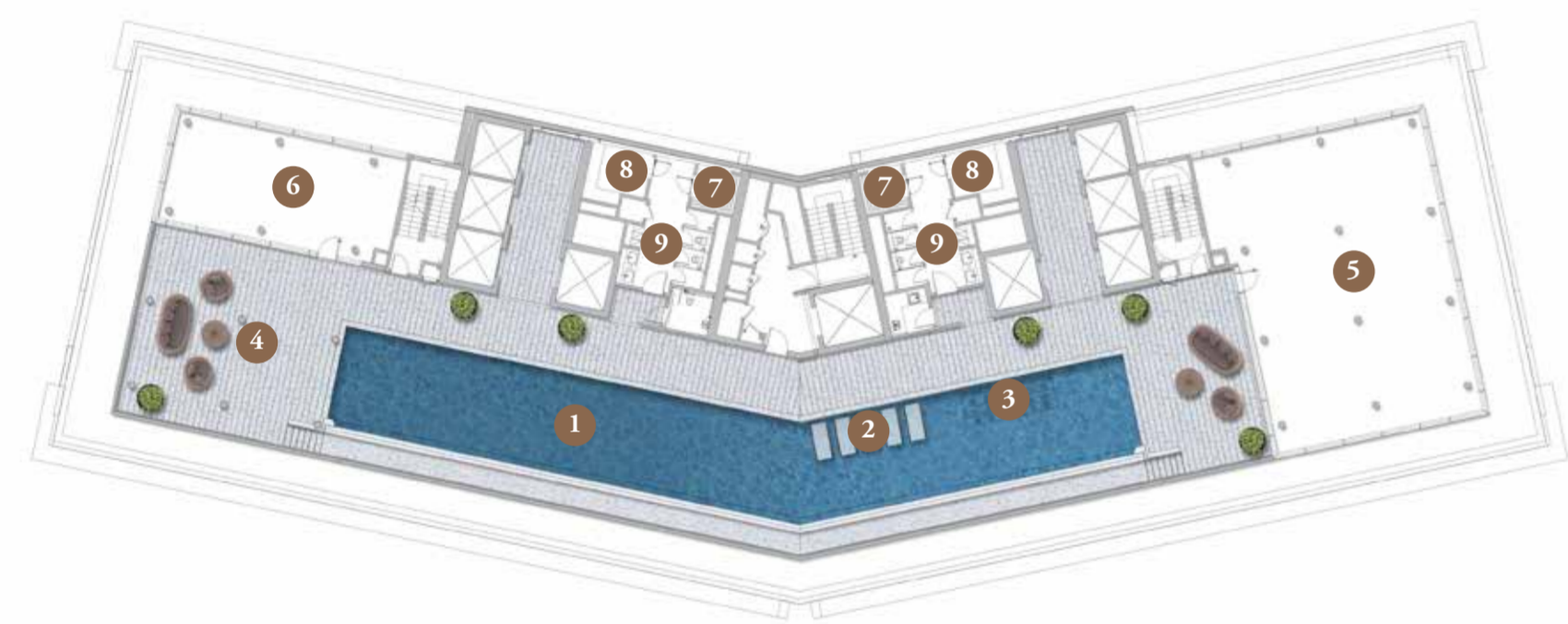


SKY FACILITIES

LEVEL 57

空中设施

57层



1. Heated Lap Pool
2. Submerged Lounger
3. Layback Jacuzzi
4. Sky Terrace
5. Gymnasium
6. Yoga
7. Sauna Room
8. Steam Room
9. Changing Room/Washroom

1. 温水天池
2. 水下浴椅
3. 后仰按摩池
4. 天空廊道
5. 健身房
6. 瑜伽室
7. 桑拿室
8. 蒸汽浴室
9. 更衣室/洗手间

FLOOR PLAN

楼层平面图

1 BEDROOM 1+1 STUDY

1 居室
1+1 书房

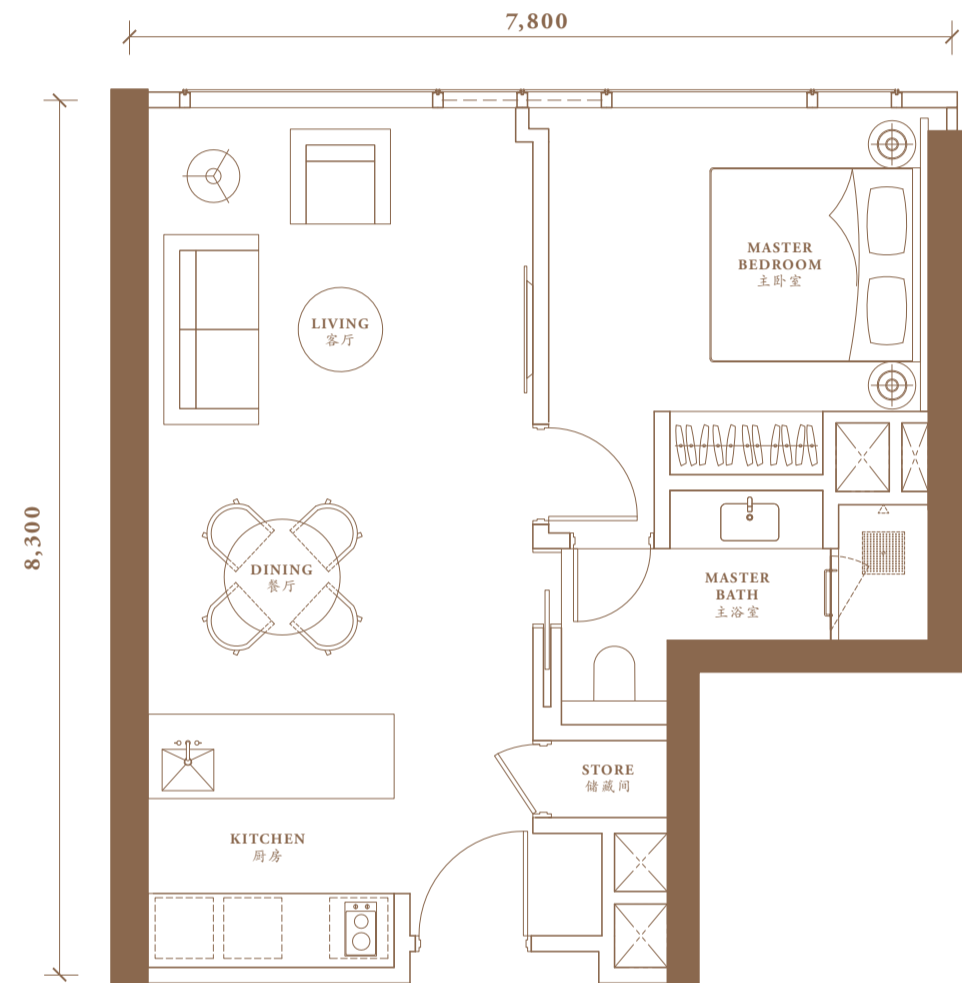


TYPE D1

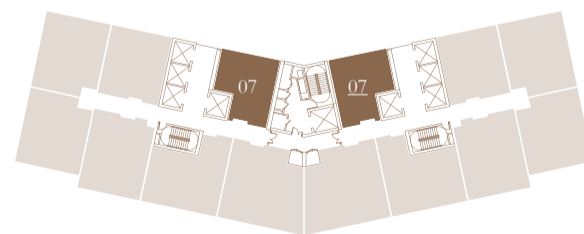
D1 房型

1 BEDROOM
614 sq.ft. (57.03 sq.m.)

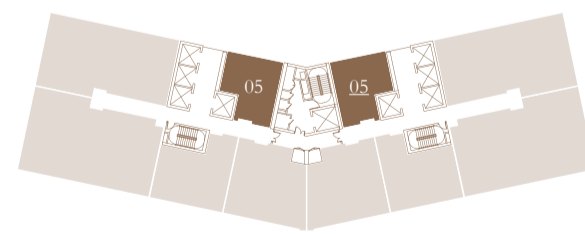
1 居室
614 平方尺 (57.03 平方米)



Levels 6-22, 25-27
6-22, 25-27 层



Levels 28-39, 42-53A
28-39, 42-53A 层

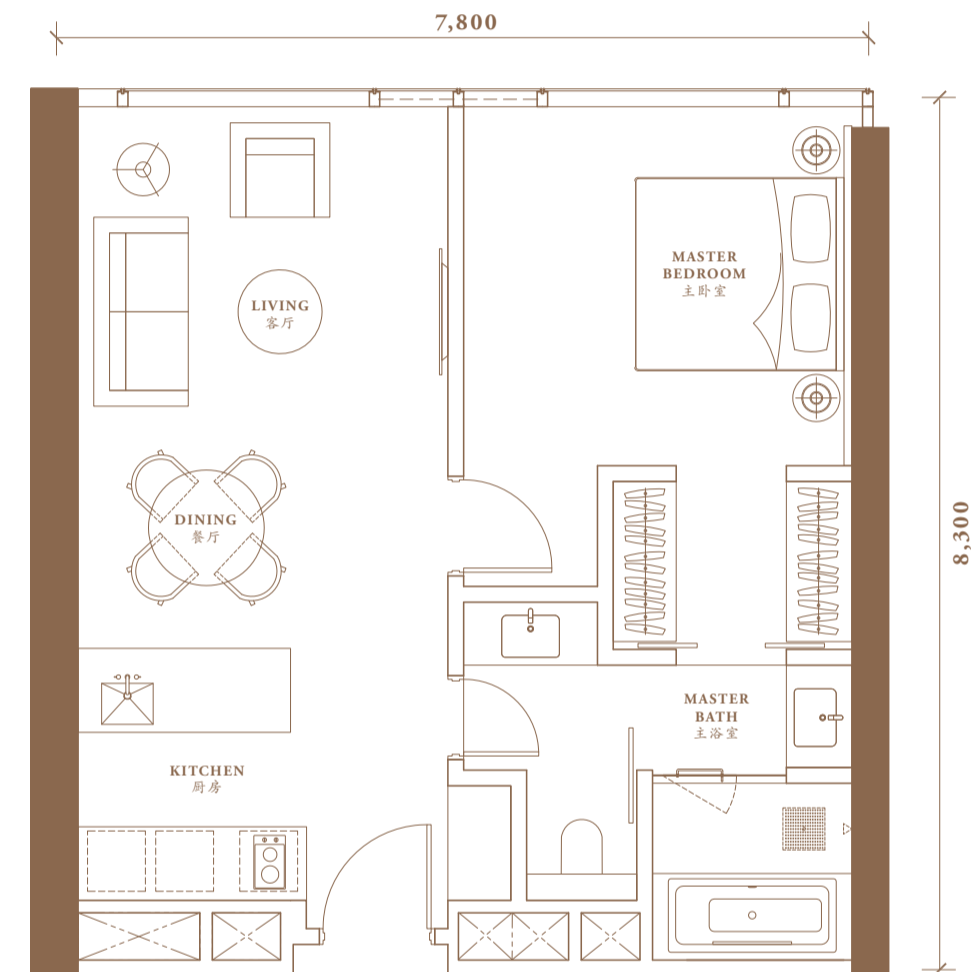


TYPE D2

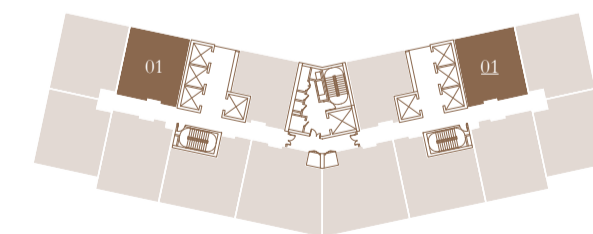
D2 房型

1 BEDROOM
691 sq.ft. (64.21 sq.m.)

1 居室
691 平方尺 (64.21 平方米)



Levels 6-27
6-27 层

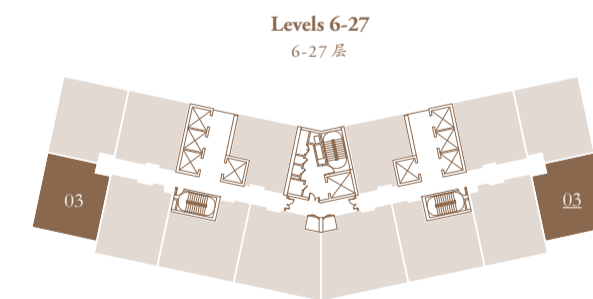
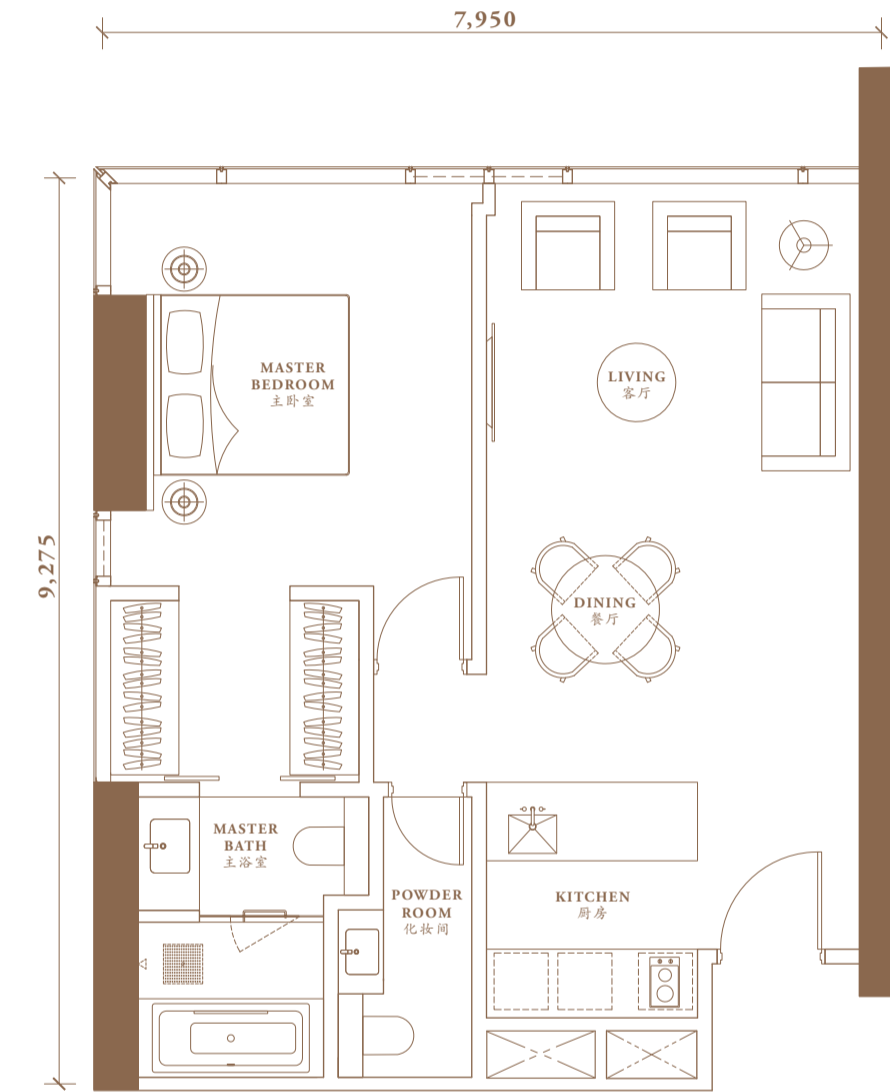
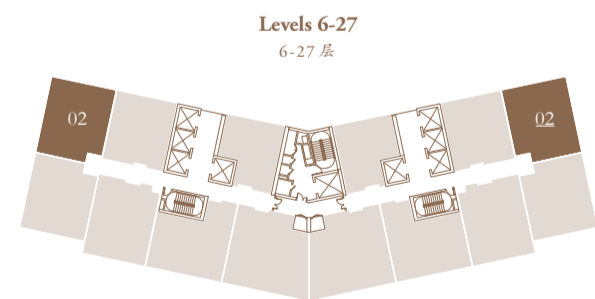
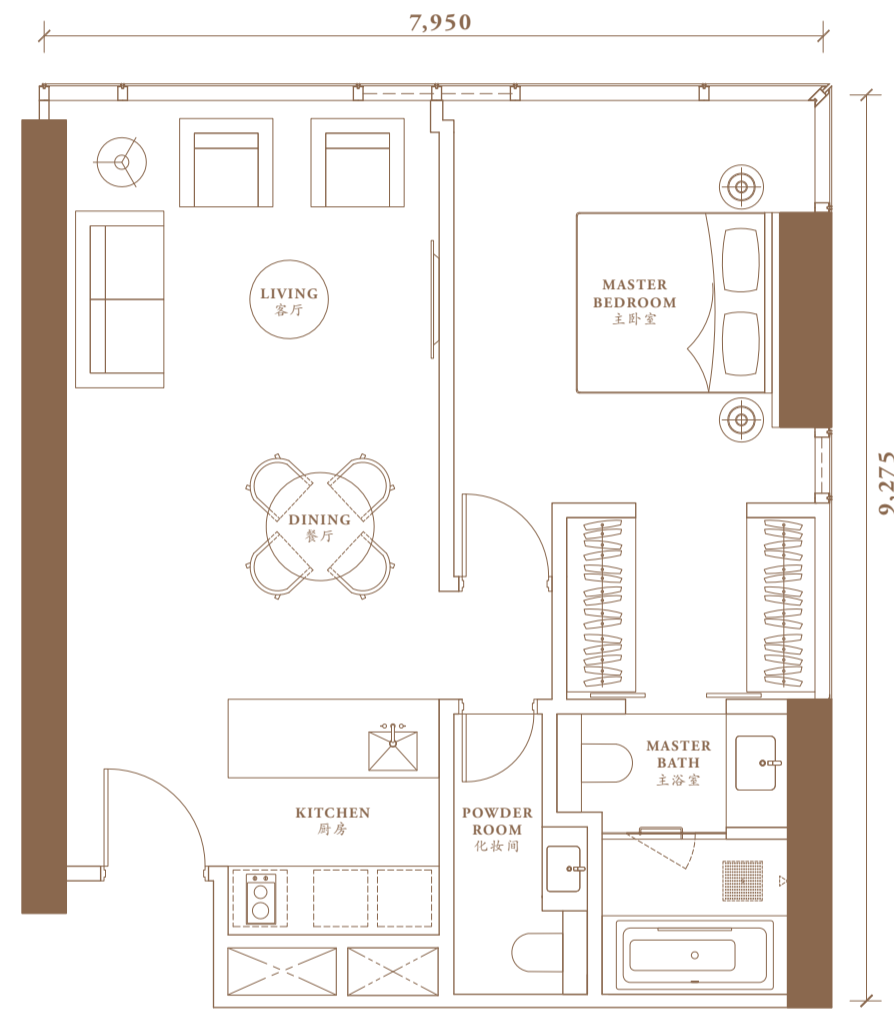


TYPE D3

D3 房型

1 BEDROOM
775 sq.ft. (71.98 sq.m.)

1 居室
775 平方尺 (71.98 平方米)

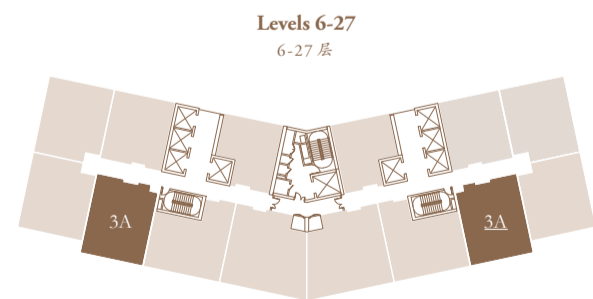
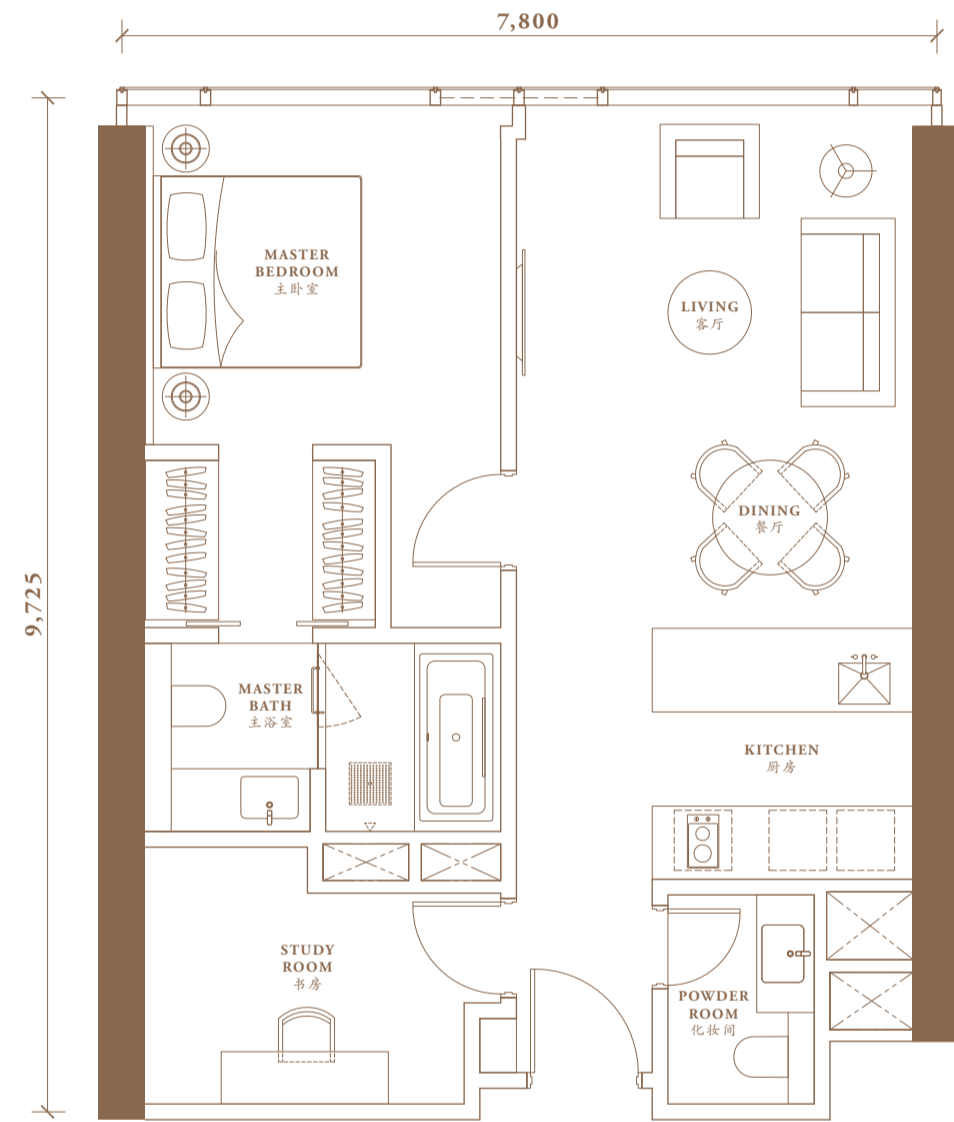


TYPE D4

D4 房型

1+1 STUDY
808 sq.ft. (75.05 sq.m.)

1+1 书房
808 平方尺 (75.05 平方米)

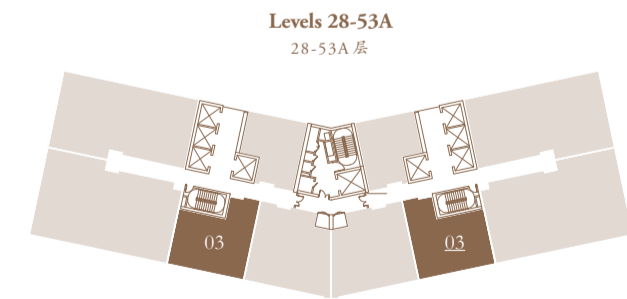
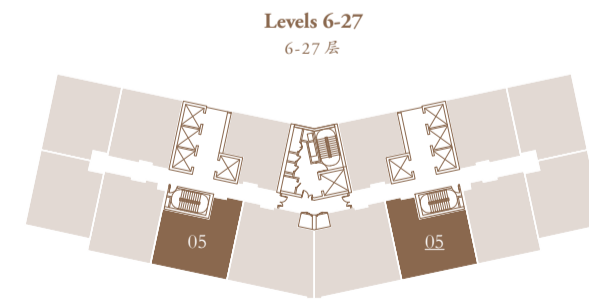
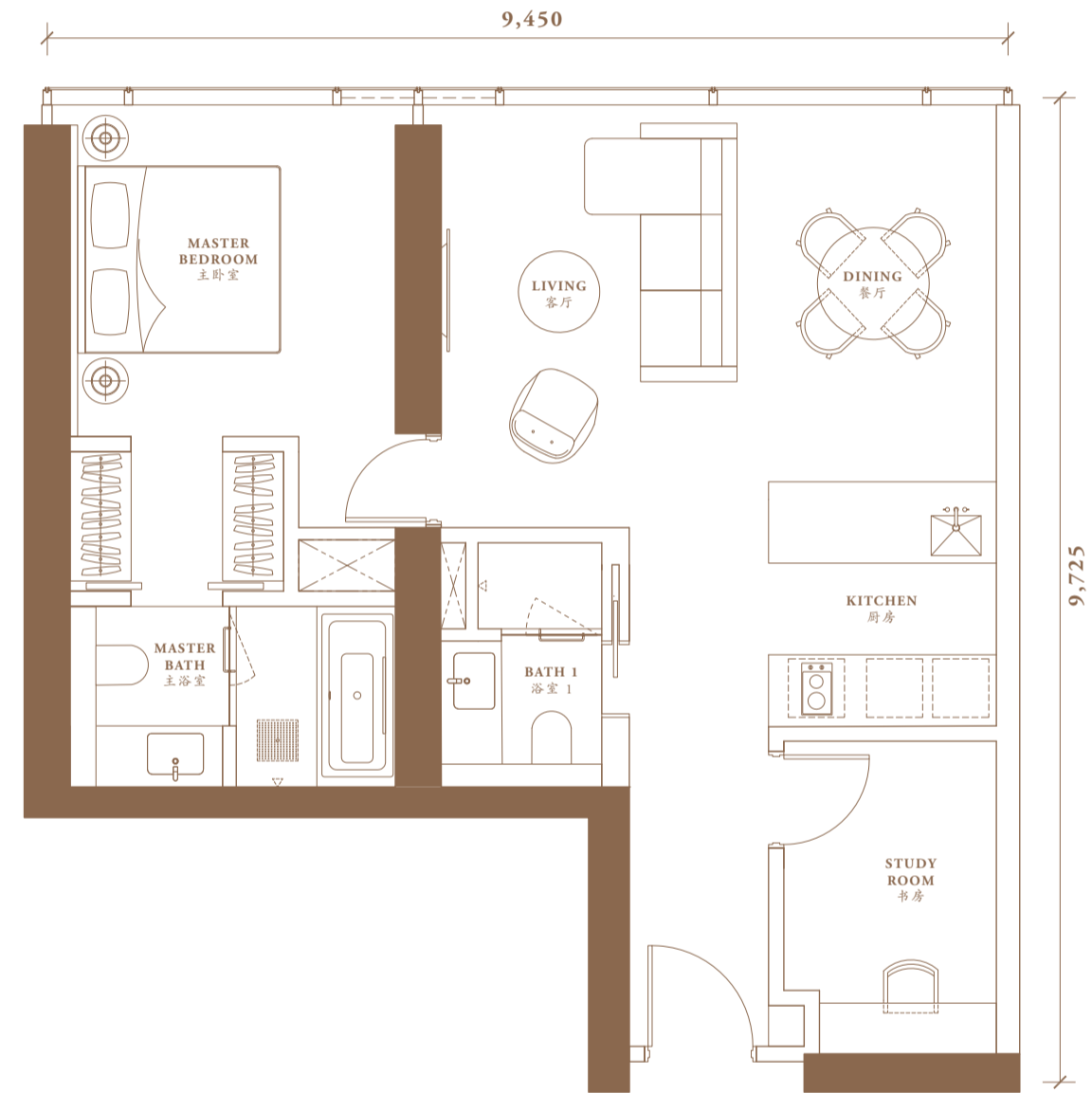


TYPE D5

D5 房型

1+1 STUDY
826 sq.ft. (76.74 sq.m.)

1+1 书房
826 平方尺 (76.74 平方米)



FLOOR PLAN

楼层平面图

2 BEDROOM
2+1 STUDY

2 居室
2+1 书房

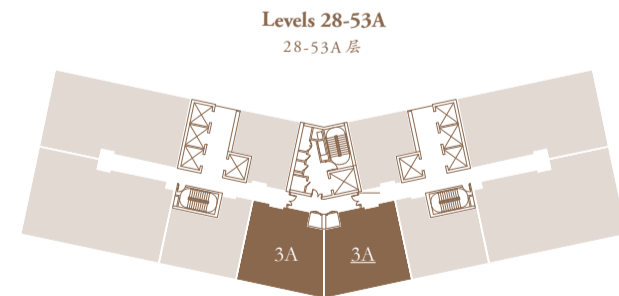
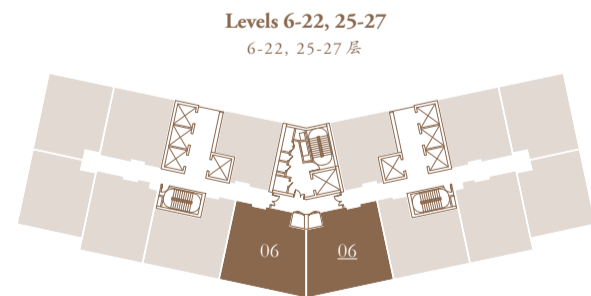
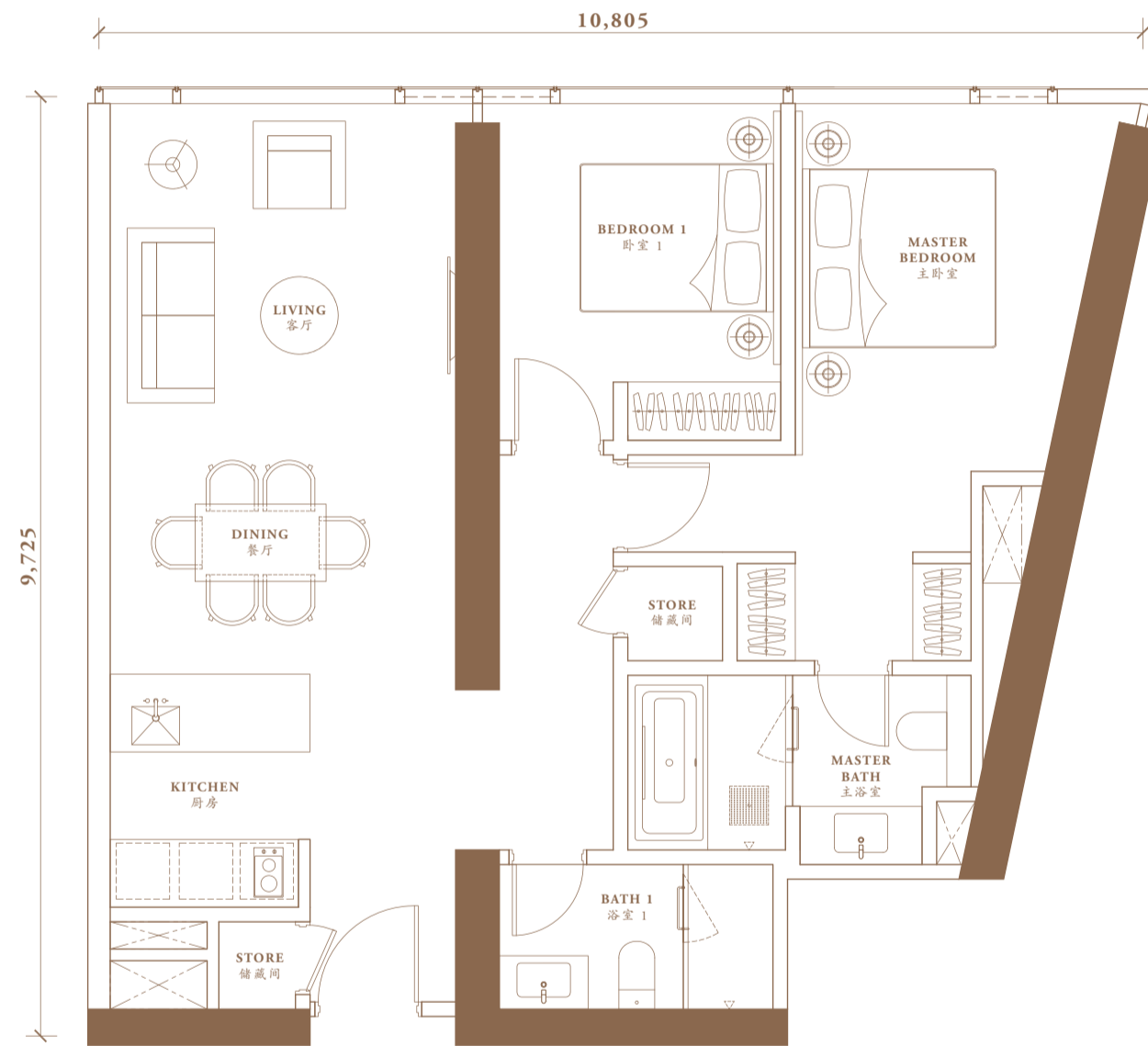


TYPE E1

E1 房型

2 BEDROOM
988 sq.ft. (91.79 sq.m.)

2 居室
988 平方尺 (91.79 平方米)

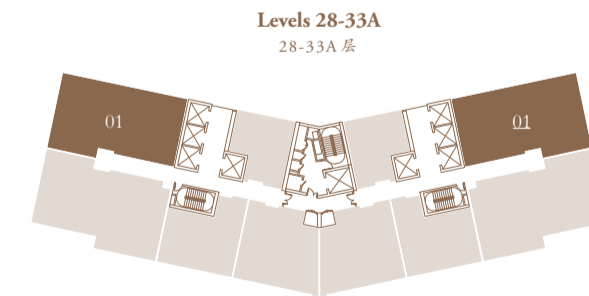
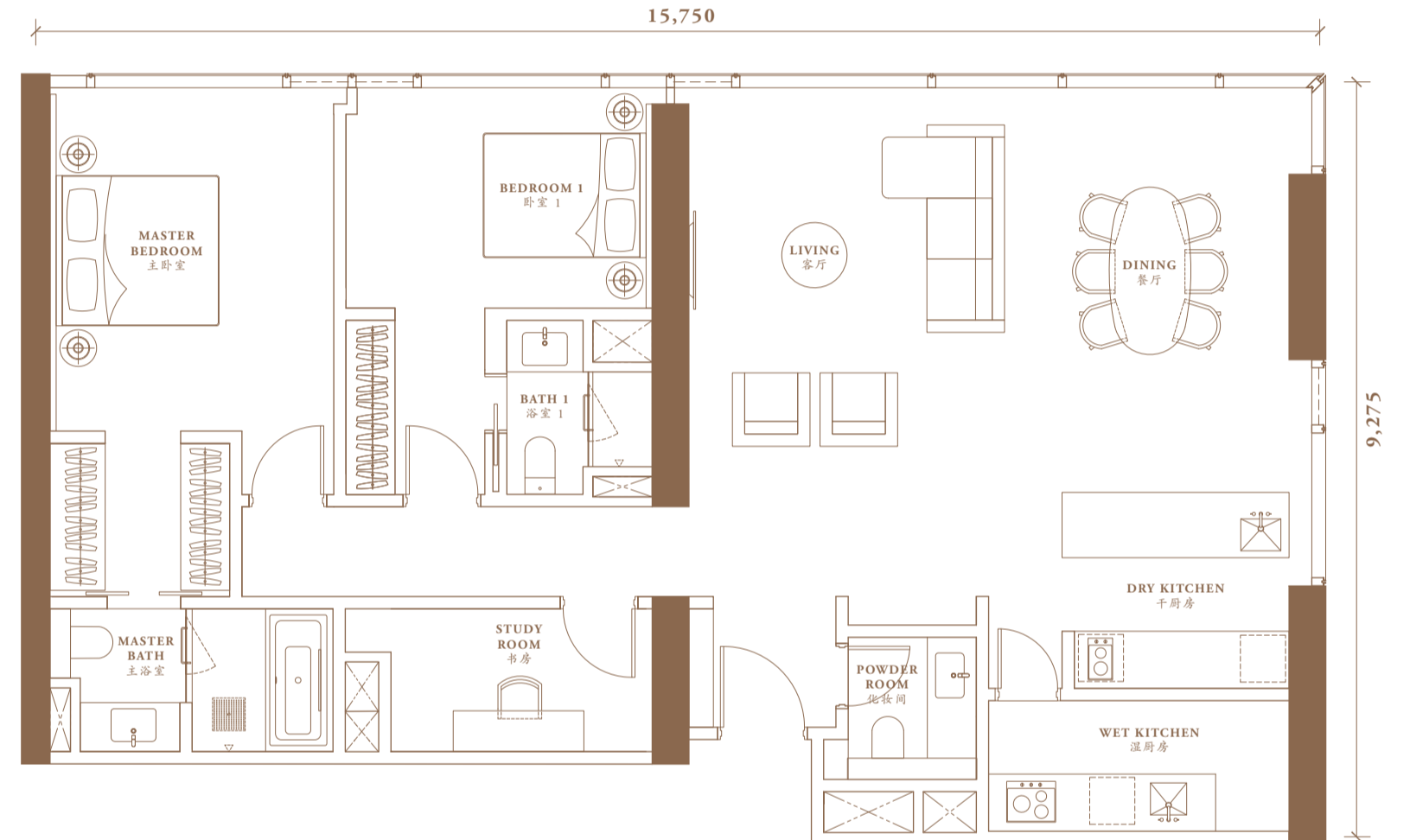


TYPE E2

E2 房型

2+1 STUDY
1,466 sq.ft. (136.19 sq.m.)

2+1 书房
1,466 平方尺 (136.19 平方米)



TYPE E2a

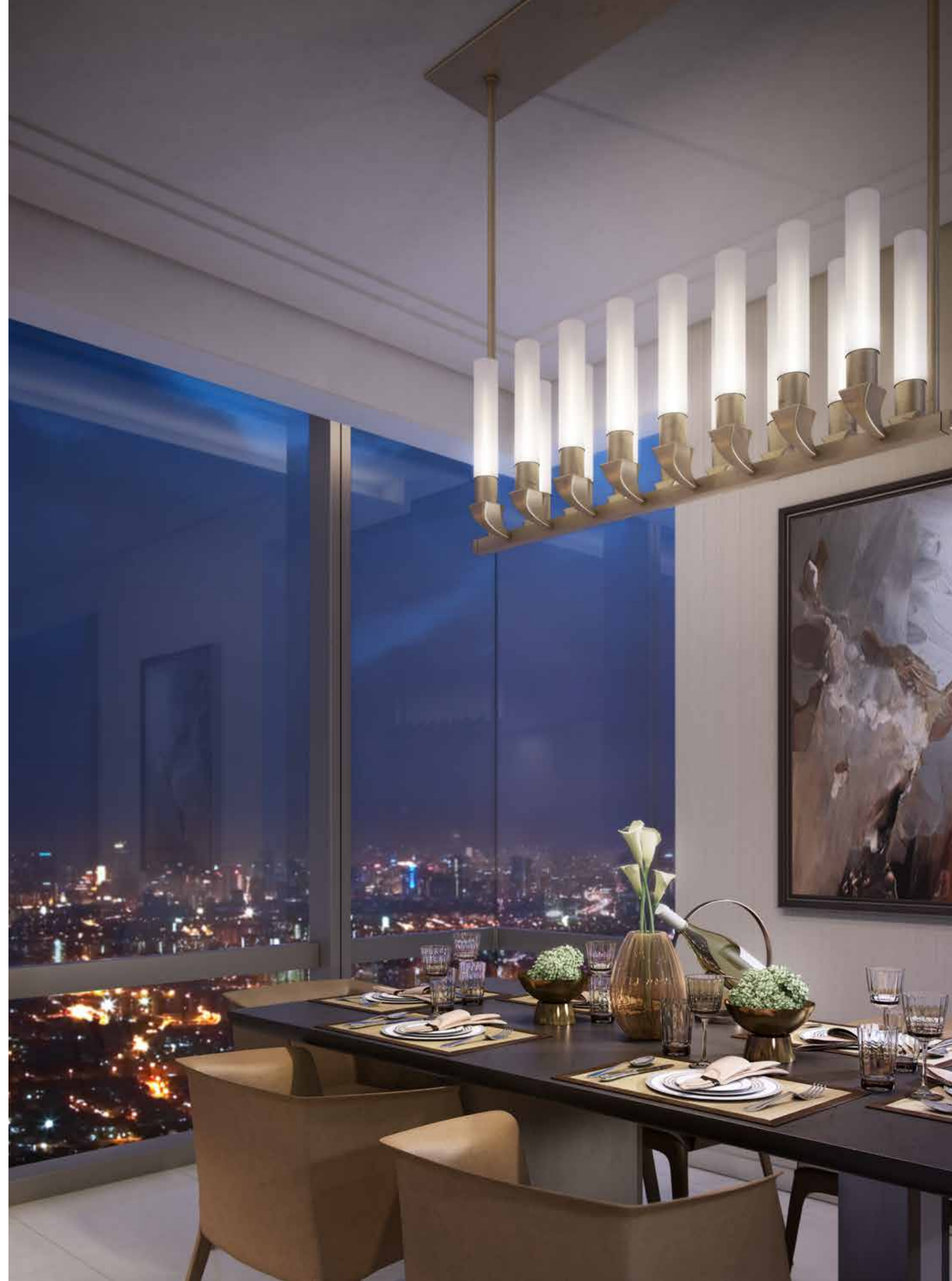
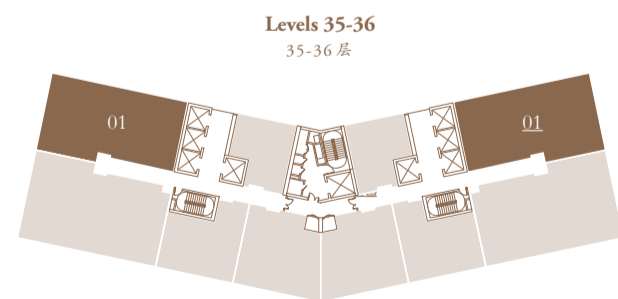
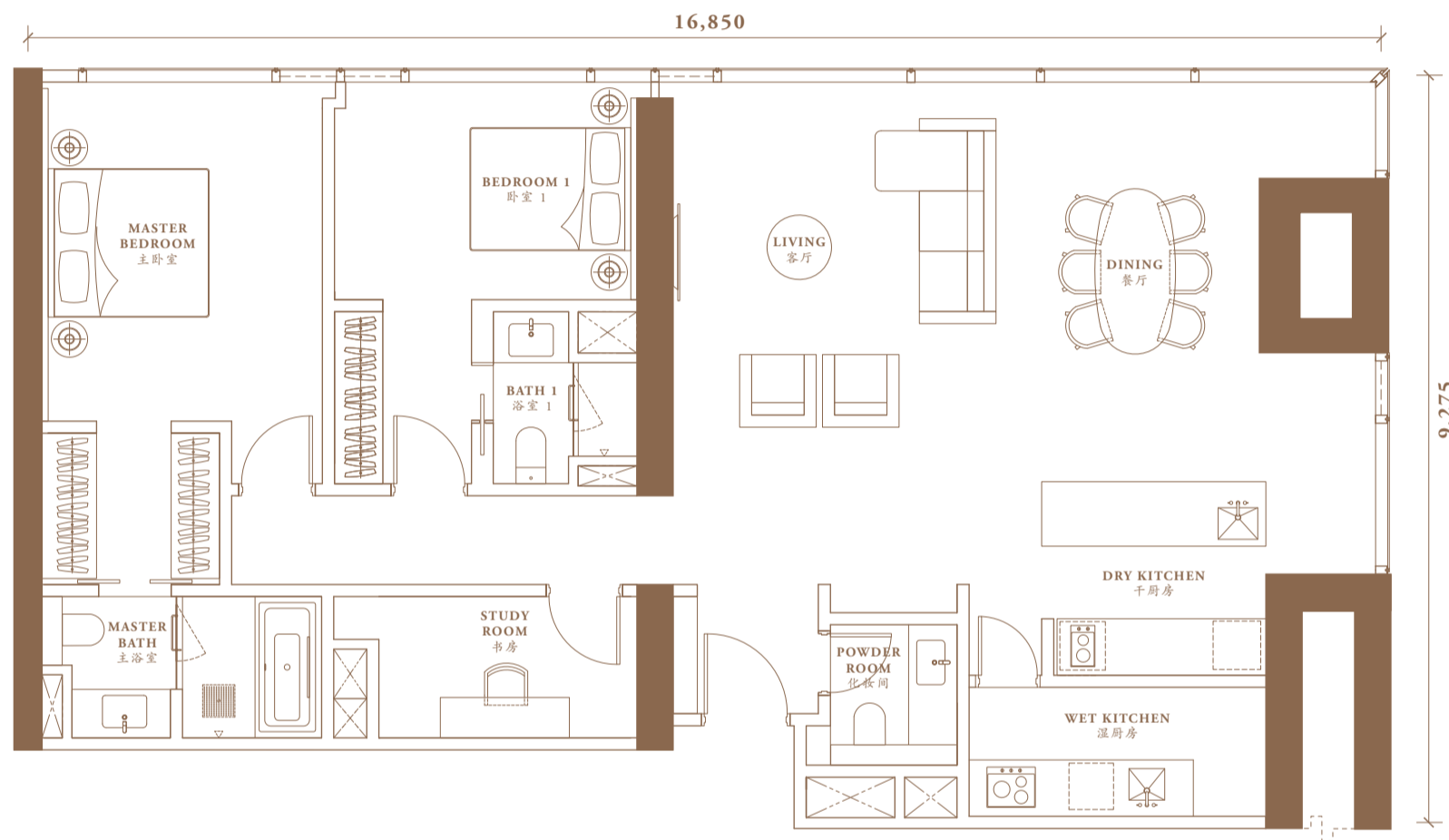
E2a 房型

2+1 STUDY

2+1 书房

1,514 sq.ft. (140.64 sq.m.)

1,514 平方尺 (140.64 平方米)

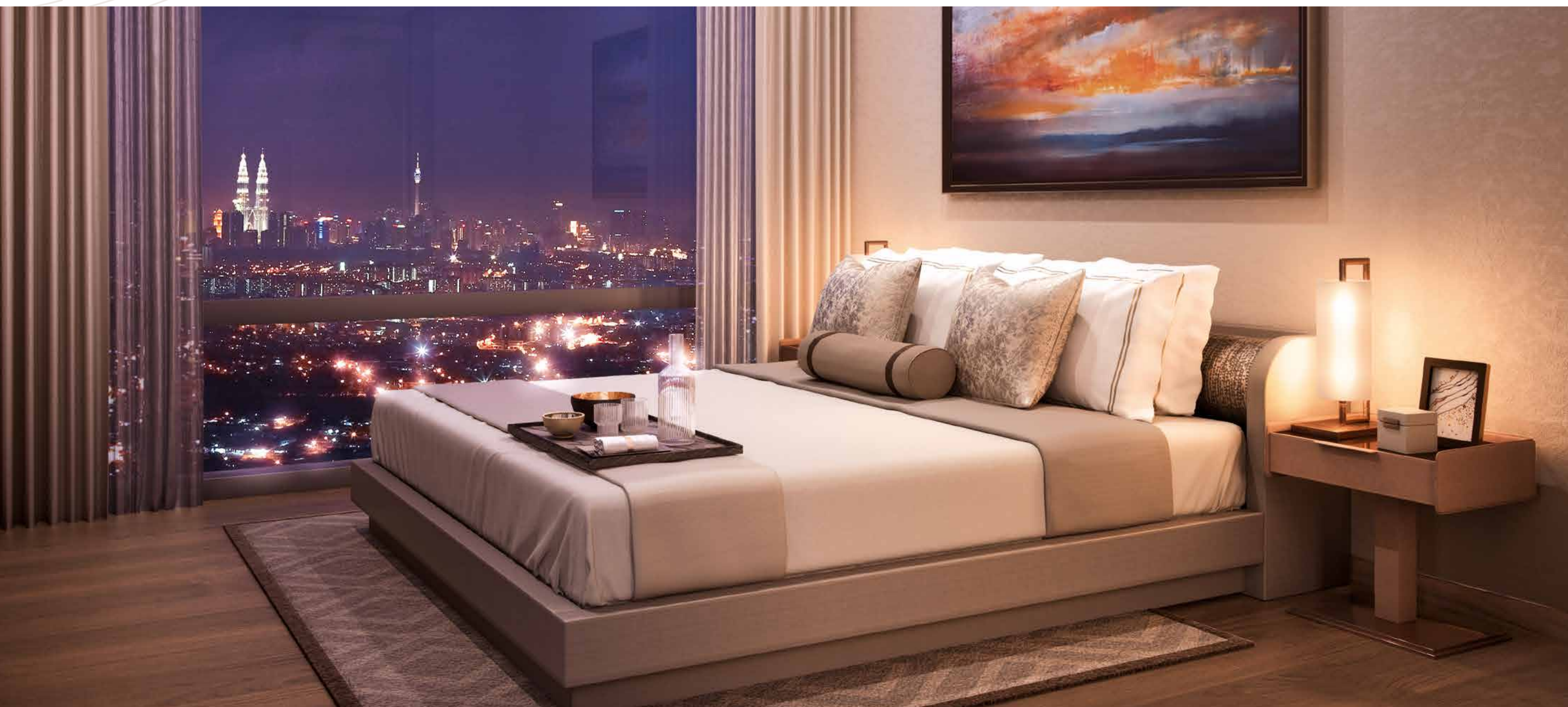


FLOOR PLAN

楼层平面图

3 BEDROOM
3+1 STUDY

3 居室
3+1 书房



TYPE F1

F1 房型

3+1 STUDY

3+1 书房

1,576 sq.ft. (146.40 sq.m.)

1,576 平方尺 (146.40 平方米)

TYPE F2

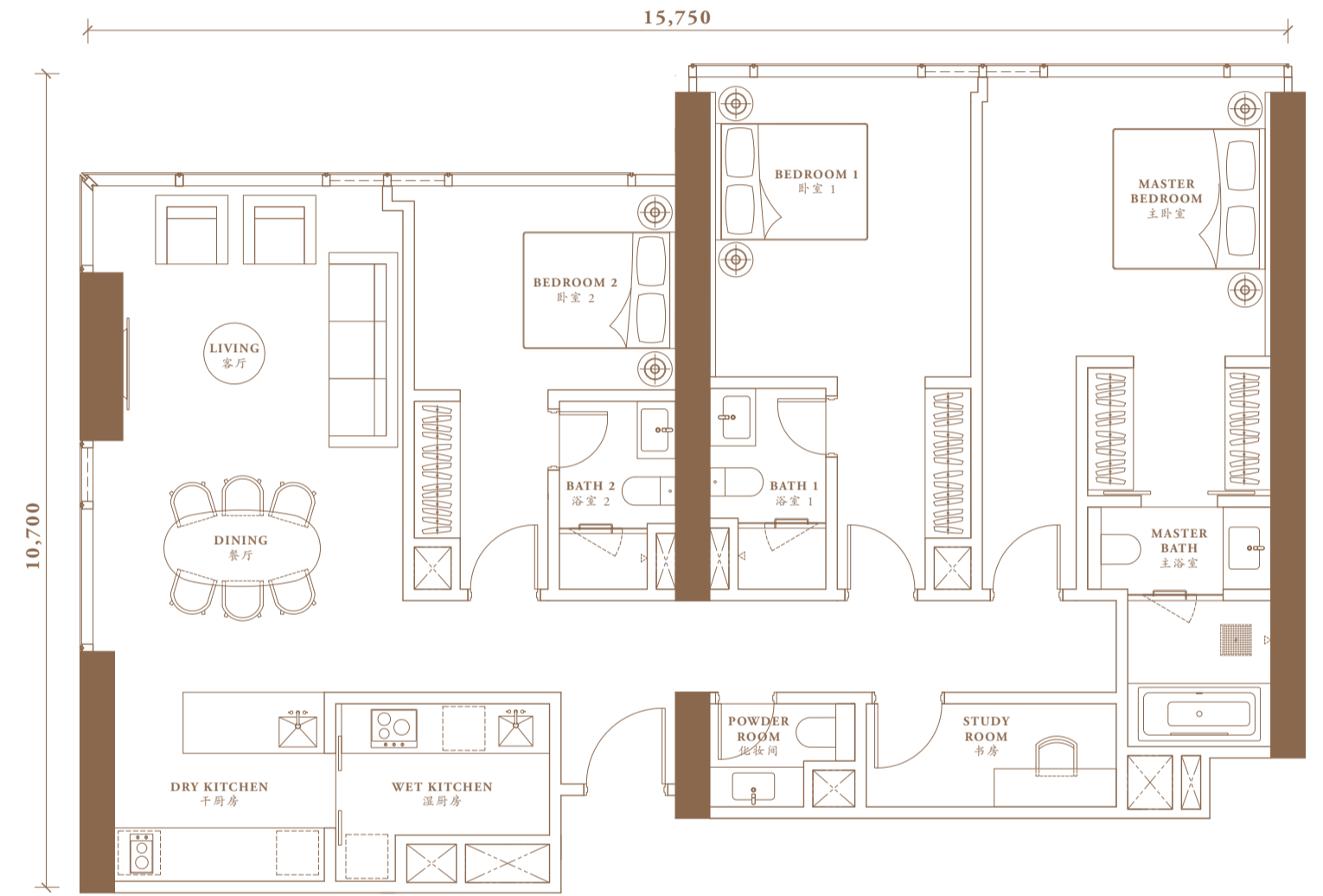
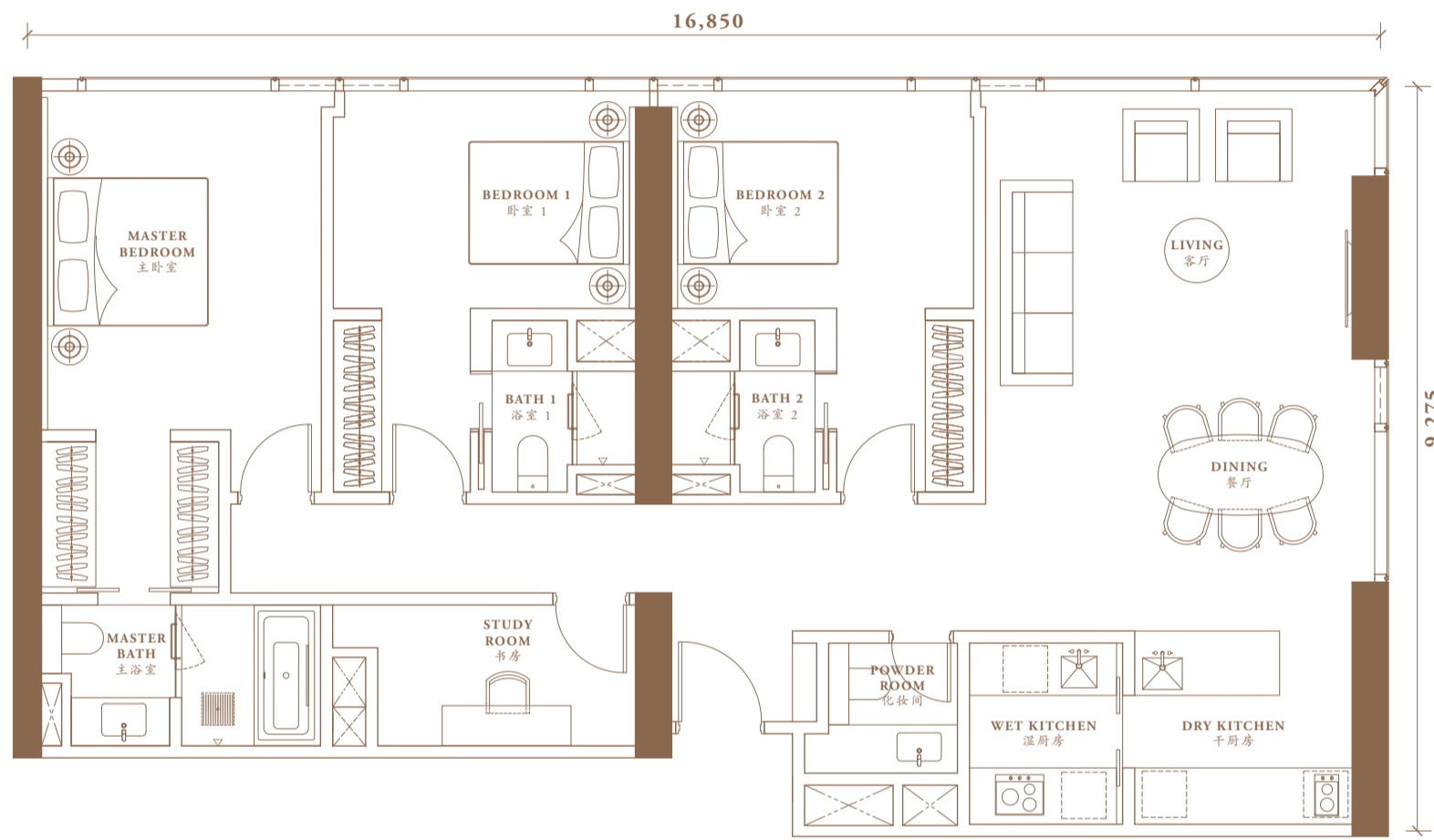
F2 房型

3+1 STUDY

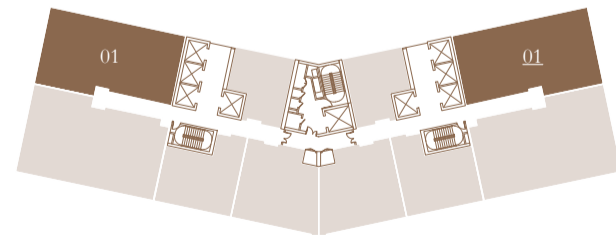
3+1 书房

1,580 sq.ft. (146.82 sq.m.)

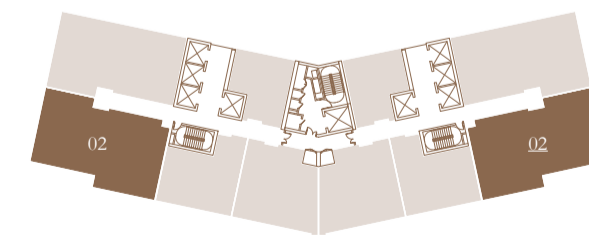
1,580 平方尺 (146.82 平方米)



Levels 37-53A
37-53A 层



Levels 28-33A
28-33A 层



TYPE F2a

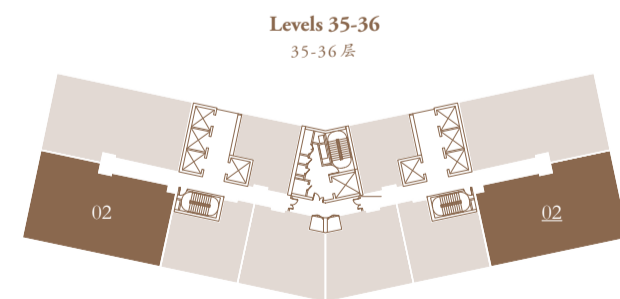
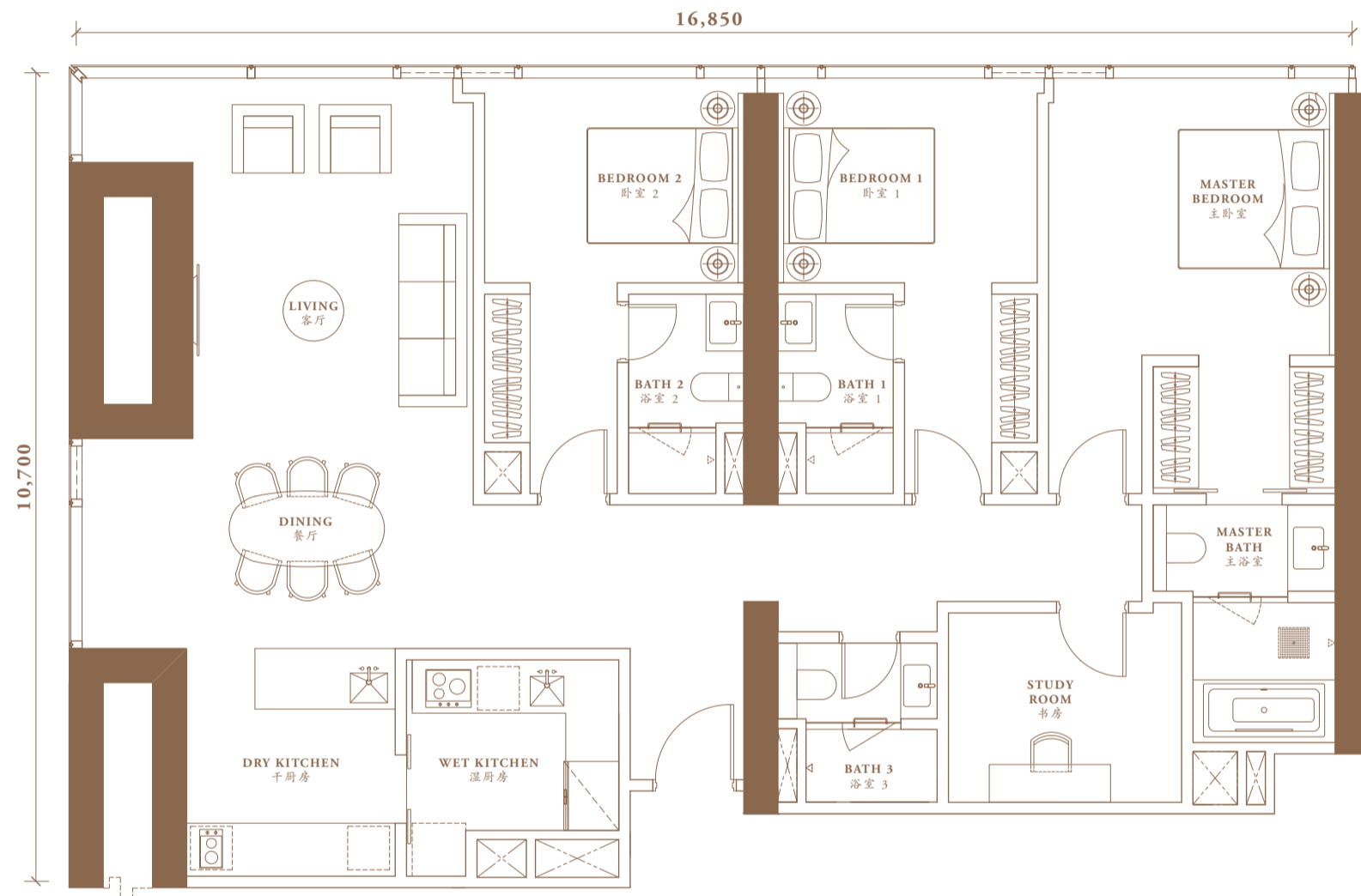
F2a 房型

3+1 STUDY

1,750 sq.ft. (162.54 sq.m.)

3+1 书房

1,750 平方尺 (162.54 平方米)



TYPE F3

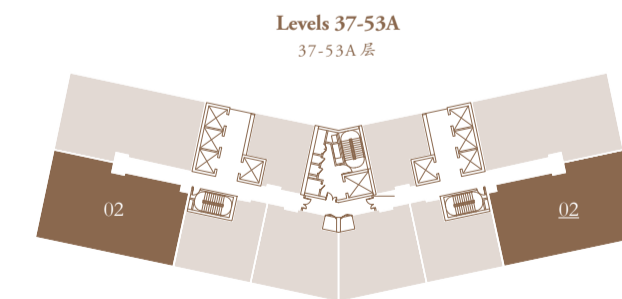
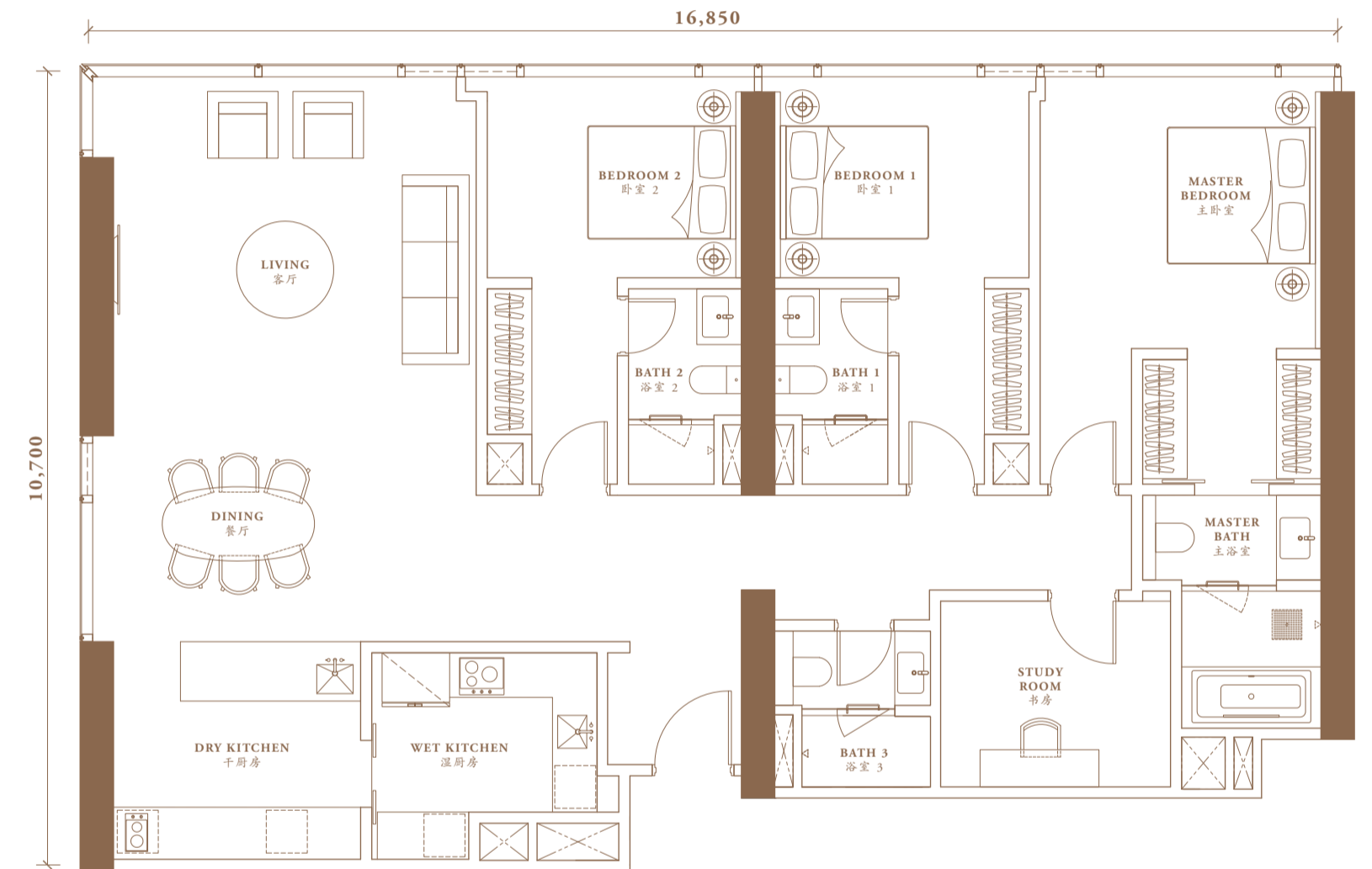
F3 房型

3+1 STUDY

1,831 sq.ft. (170.07 sq.m.)

3+1 书房

1,831 平方尺 (170.07 平方米)



STOREY PLANS

楼层图

BUKIT KIARA FACING

Bukit Kiara 方向

STOREY PLANS & SPECIFICATIONS

楼层平面图与规格

LEVEL 楼层	NORTH 北翼		SKY FACILITIES 空中设施		SOUTH 南翼	
57	SKY FACILITIES 空中设施					
56	M&E 机电房					
	TYPE PH1 房型 6,483 sq.ft. 平方米			TYPE PH1 房型 6,483 sq.ft. 平方米		
55	R1/N-55-01		R1/S-55-01		R1/S-55-01	
	TYPE F1 房型 1,576 sq.ft. 平方米		TYPE D1 房型 614 sq.ft. 平方米		TYPE F1 房型 1,576 sq.ft. 平方米	
53A	R1/N-53A-01		R1/N-53A-05		R1/S-53A-01	
53	R1/N-53-01		R1/N-53-05		R1/S-53-01	
52	R1/N-52-01		R1/N-52-05		R1/S-52-01	
51	R1/N-51-01		R1/N-51-05		R1/S-51-01	
50	R1/N-50-01		R1/N-50-05		R1/S-50-01	
49	R1/N-49-01		R1/N-49-05		R1/S-49-01	
48	R1/N-48-01		R1/N-48-05		R1/S-48-01	
47	R1/N-47-01		R1/N-47-05		R1/S-47-01	
46	R1/N-46-01		R1/N-46-05		R1/S-46-01	
45	R1/N-45-01		R1/N-45-05		R1/S-45-01	
43A	R1/N-43A-01		R1/N-43A-05		R1/S-43A-01	
43	R1/N-43-01		R1/N-43-05		R1/S-43-01	
42	R1/N-42-01		R1/N-42-05		R1/S-42-01	
41	R1/N-41-01		R1/N-41-05		R1/S-41-01	
40	R1/N-40-01		R1/N-40-05		R1/S-40-01	
39	R1/N-39-01		R1/N-39-05		R1/S-39-01	
38	R1/N-38-01		R1/N-38-05		R1/S-38-01	
37	R1/N-37-01		R1/N-37-05		R1/S-37-01	
	TYPE E2a 房型 1,514 sq.ft. 平方米		TYPE D1 房型 614 sq.ft. 平方米		TYPE E2a 房型 1,514 sq.ft. 平方米	
36	R1/N-36-01		R1/N-36-05		R1/S-36-01	
35	R1/N-35-01		R1/N-35-05		R1/S-35-01	
	TYPE E2 房型 1,466 sq.ft. 平方米		TYPE D1 房型 614 sq.ft. 平方米		TYPE E2 房型 1,466 sq.ft. 平方米	
33A	R1/N-33A-01		R1/N-33A-05		R1/S-33A-01	
33	R1/N-33-01		R1/N-33-05		R1/S-33-01	
32	R1/N-32-01		R1/N-32-05		R1/S-32-01	
31	R1/N-31-01		R1/N-31-05		R1/S-31-01	
30	R1/N-30-01		R1/N-30-05		R1/S-30-01	
29	R1/N-29-01		R1/N-29-05		R1/S-29-01	
28	R1/N-28-01		R1/N-28-05		R1/S-28-01	
	TYPE D3 房型 775 sq.ft. 平方米		TYPE D1 房型 614 sq.ft. 平方米		TYPE D2 房型 691 sq.ft. 平方米	
27	R1/N-27-02		R1/N-27-07		R1/S-27-01	
26	R1/N-26-02		R1/N-26-07		R1/S-26-02	
25	R1/N-25-02		R1/N-25-07		R1/S-25-01	
23A	R1/N-23A-02		R1/N-23A-07		R1/S-23A-01	
23	R1/N-23-02		R1/N-23-07		R1/S-23-02	
22	R1/N-22-02		R1/N-22-07		R1/S-22-01	
21	R1/N-21-02		R1/N-21-07		R1/S-21-02	
20	R1/N-20-02		R1/N-20-07		R1/S-20-01	
19	R1/N-19-02		R1/N-19-07		R1/S-19-02	
18	R1/N-18-02		R1/N-18-07		R1/S-18-01	
17	R1/N-17-02		R1/N-17-07		R1/S-17-02	
16	R1/N-16-02		R1/N-16-07		R1/S-16-01	
15	R1/N-15-02		R1/N-15-07		R1/S-15-02	
13A	R1/N-13A-02		R1/N-13A-07		R1/S-13A-01	
13	R1/N-13-02		R1/N-13-07		R1/S-13-02	
12	R1/N-12-02		R1/N-12-07		R1/S-12-01	
11	R1/N-11-02		R1/N-11-07		R1/S-11-02	
10	R1/N-10-02		R1/N-10-07		R1/S-10-01	
9	R1/N-09-02		R1/N-09-07		R1/S-09-02	
8	R1/N-08-02		R1/N-08-07		R1/S-08-01	
7	R1/N-07-02		R1/N-07-07		R1/S-07-02	
6	R1/N-06-02		R1/N-06-07		R1/S-06-01	
5	TRANSFER + M&E 换乘层 + 机电房					
3A	GARDEN FACILITIES 园林设施					

STOREY PLANS 楼层图

KLCC FACING KLCC 方向

LEVEL 楼层	SOUTH 南翼			NORTH 北翼		
57	SKY FACILITIES 空中设施					
56	M&E 机电房					
	TYPE PH1 房型 6,483 sq.ft. 平方米			TYPE PH1 房型 6,483 sq.ft. 平方米		
55	R1/S-55-01			R1/N-55-01		
	TYPE F3 房型 1,831 sq.ft. 平方米	TYPE D5 房型 826 sq.ft. 平方米	TYPE E1 房型 988 sq.ft. 平方米	TYPE E1 房型 988 sq.ft. 平方米	TYPE D5 房型 826 sq.ft. 平方米	TYPE F3 房型 1,831 sq.ft. 平方米
53A	R1/S-53A-02	R1/S-53A-03	R1/S-53A-3A	R1/N-53A-3A	R1/N-53A-03	R1/N-53A-02
53	R1/S-53-02	R1/S-53-03	R1/S-53-3A	R1/N-53-3A	R1/N-53-03	R1/N-53-02
52	R1/S-52-02	R1/S-52-03	R1/S-52-3A	R1/N-52-3A	R1/N-52-03	R1/N-52-02
51	R1/S-51-02	R1/S-51-03	R1/S-51-3A	R1/N-51-3A	R1/N-51-03	R1/N-51-02
50	R1/S-50-02	R1/S-50-03	R1/S-50-3A	R1/N-50-3A	R1/N-50-03	R1/N-50-02
49	R1/S-49-02	R1/S-49-03	R1/S-49-3A	R1/N-49-3A	R1/N-49-03	R1/N-49-02
48	R1/S-48-02	R1/S-48-03	R1/S-48-3A	R1/N-48-3A	R1/N-48-03	R1/N-48-02
47	R1/S-47-02	R1/S-47-03	R1/S-47-3A	R1/N-47-3A	R1/N-47-03	R1/N-47-02
46	R1/S-46-02	R1/S-46-03	R1/S-46-3A	R1/N-46-3A	R1/N-46-03	R1/N-46-02
45	R1/S-45-02	R1/S-45-03	R1/S-45-3A	R1/N-45-3A	R1/N-45-03	R1/N-45-02
43A	R1/S-43A-02	R1/S-43A-03	R1/S-43A-3A	R1/N-43A-3A	R1/N-43A-03	R1/N-43A-02
43	R1/S-43-02	R1/S-43-03	R1/S-43-3A	R1/N-43-3A	R1/N-43-03	R1/N-43-02
42	R1/S-42-02	R1/S-42-03	R1/S-42-3A	R1/N-42-3A	R1/N-42-03	R1/N-42-02
41	R1/S-41-02	R1/S-41-03	R1/S-41-3A	R1/N-41-3A	R1/N-41-03	R1/N-41-02
40	R1/S-40-02	R1/S-40-03	R1/S-40-3A	R1/N-40-3A	R1/N-40-03	R1/N-40-02
39	R1/S-39-02	R1/S-39-03	R1/S-39-3A	R1/N-39-3A	R1/N-39-03	R1/N-39-02
38	R1/S-38-02	R1/S-38-03	R1/S-38-3A	R1/N-38-3A	R1/N-38-03	R1/N-38-02
37	R1/S-37-02	R1/S-37-03	R1/S-37-3A	R1/N-37-3A	R1/N-37-03	R1/N-37-02
	TYPE F2a 房型 1,750 sq.ft. 平方米	TYPE D5 房型 826 sq.ft. 平方米	TYPE E1 房型 988 sq.ft. 平方米	TYPE E1 房型 988 sq.ft. 平方米	TYPE D5 房型 826 sq.ft. 平方米	TYPE F2a 房型 1,750 sq.ft. 平方米
36	R1/S-36-02	R1/S-36-03	R1/S-36-3A	R1/N-36-3A	R1/N-36-03	R1/N-36-02
35	R1/S-35-02	R1/S-35-03	R1/S-35-3A	R1/N-35-3A	R1/N-35-03	R1/N-35-02
	TYPE F2 房型 1,580 sq.ft. 平方米	TYPE D5 房型 826 sq.ft. 平方米	TYPE E1 房型 988 sq.ft. 平方米	TYPE E1 房型 988 sq.ft. 平方米	TYPE D5 房型 826 sq.ft. 平方米	TYPE F2 房型 1,580 sq.ft. 平方米
33A	R1/S-33A-02	R1/S-33A-03	R1/S-33A-3A	R1/N-33A-3A	R1/N-33A-03	R1/N-33A-02
33	R1/S-33-02	R1/S-33-03	R1/S-33-3A	R1/N-33-3A	R1/N-33-03	R1/N-33-02
32	R1/S-32-02	R1/S-32-03	R1/S-32-3A	R1/N-32-3A	R1/N-32-03	R1/N-32-02
31	R1/S-31-02	R1/S-31-03	R1/S-31-3A	R1/N-31-3A	R1/N-31-03	R1/N-31-02
30	R1/S-30-02	R1/S-30-03	R1/S-30-3A	R1/N-30-3A	R1/N-30-03	R1/N-30-02
29	R1/S-29-02	R1/S-29-03	R1/S-29-3A	R1/N-29-3A	R1/N-29-03	R1/N-29-02
28	R1/S-28-02	R1/S-28-03	R1/S-28-3A	R1/N-28-3A	R1/N-28-03	R1/N-28-02
	TYPE D3 房型 775 sq.ft. 平方米	TYPE D4 房型 808 sq.ft. 平方米	TYPE D5 房型 826 sq.ft. 平方米	TYPE E1 房型 988 sq.ft. 平方米	TYPE E1 房型 988 sq.ft. 平方米	TYPE D5 房型 826 sq.ft. 平方米
27	R1/S-27-03	R1/S-27-3A	R1/S-27-05	R1/N-27-06	R1/N-27-05	R1/N-27-03
26	R1/S-26-03	R1/S-26-3A	R1/S-26-05	R1/N-26-06	R1/N-26-05	R1/N-26-03
25	R1/S-25-03	R1/S-25-3A	R1/S-25-05	R1/N-25-06	R1/N-25-05	R1/N-25-03
23A	R1/S-23A-03	R1/S-23A-3A	R1/S-23A-05	M&E 机电房		R1/N-23A-03
23	R1/S-23-03	R1/S-23-3A	R1/S-23-05	M&E 机电房		R1/N-23-03
22	R1/S-22-03	R1/S-22-3A	R1/S-22-05	R1/S-22-06	R1/N-22-06	R1/N-22-03
21	R1/S-21-03	R1/S-21-3A	R1/S-21-05	R1/S-21-06	R1/N-21-06	R1/N-21-03
20	R1/S-20-03	R1/S-20-3A	R1/S-20-05	R1/S-20-06	R1/N-20-06	R1/N-20-03
19	R1/S-19-03	R1/S-19-3A	R1/S-19-05	R1/S-19-06	R1/N-19-06	R1/N-19-03
18	R1/S-18-03	R1/S-18-3A	R1/S-18-05	R1/S-18-06	R1/N-18-06	R1/N-18-03
17	R1/S-17-03	R1/S-17-3A	R1/S-17-05	R1/S-17-06	R1/N-17-06	R1/N-17-03
16	R1/S-16-03	R1/S-16-3A	R1/S-16-05	R1/S-16-06	R1/N-16-06	R1/N-16-03
15	R1/S-15-03	R1/S-15-3A	R1/S-15-05	R1/S-15-06	R1/N-15-06	R1/N-15-03
13A	R1/S-13A-03	R1/S-13A-3A	R1/S-13A-05	R1/S-13A-06	R1/N-13A-06	R1/N-13A-03
13	R1/S-13-03	R1/S-13-3A	R1/S-13-05	R1/S-13-06	R1/N-13-06	R1/N-13-03
12	R1/S-12-03	R1/S-12-3A	R1/S-12-05	R1/S-12-06	R1/N-12-06	R1/N-12-03
11	R1/S-11-03	R1/S-11-3A	R1/S-11-05	R1/S-11-06	R1/N-11-06	R1/N-11-03
10	R1/S-10-03	R1/S-10-3A	R1/S-10-05	R1/S-10-06	R1/N-10-06	R1/N-10-03
9	R1/S-09-03	R1/S-09-3A	R1/S-09-05	R1/S-09-06	R1/N-09-06	R1/N-09-03
8	R1/S-08-03	R1/S-08-3A	R1/S-08-05	R1/S-08-06	R1/N-08-06	R1/N-08-03
7	R1/S-07-03	R1/S-07-3A	R1/S-07-05	R1/S-07-06	R1/N-07-06	R1/N-07-03
6	R1/S-06-03	R1/S-06-3A	R1/S-06-05	R1/S-06-06	R1/N-06-06	R1/N-06-03
5	TRANSFER + M&E 换乘层 + 机电房					
3A	GARDEN FACILITIES 园林设施					

SPECIFICATIONS

Structure	Reinforced Concrete/Shear Wall System
Wall	Common Bricks/Reinforced Concrete/Shear Wall System
Roofing	Reinforced Concrete Roof Slab
Ceiling	Fibrous Plaster Ceiling/Skim Coat
Windows	Powder Coated Aluminum Frame Glass Panel

Doors	
Main Entry	Fire-Rated Solid Timber Door
Others	Timber Door, Timber Sliding Door

Ironmongery	Quality Locksets
Wall Finishes	
Living, Dining, Kitchen, Dry Kitchen, All Bedrooms, Study Room, Store	Plaster, Skim Coat and Emulsion Paint
Wet Kitchen	Homogeneous Tiles to ceiling height
All Bathrooms, Powder Room	Compressed Marble to ceiling height

Floor Finishes	
Living, Dining, Kitchen, Dry Kitchen, All Bedrooms, Study Room	Compressed Marble
All Bedrooms, Study Room	Solid Timber Strip
Wet Kitchen	Homogeneous Tiles

Sanitary Wares And Fittings	
Kitchen, Dry Kitchen, Wet Kitchen	Sink complete with tap fittings
Master Bath	Basin, Rainshower, Hand-held Shower, Bathrub & WC
Bathroom 1, Bathroom 2, Bathroom 3	Basin, Hand-held Shower & WC
Powder Room	Basin & WC

Mechanical & Electrical Installation	
Electrical Points	Lighting and Power Points will be provided according to M&E engineer's specifications
Centralised Chilled Water Air Conditioning with Individual Control	
- Type D1, D2, D3, D4, D5, E1	Living & Dining, All Bedrooms, Study Room
- Type E2, E2a, F1, F2, F2a, F3	Living, Dining, All Bedrooms, Study Room
Hot Water Supply	Kitchen, Wet Kitchen, All Bathrooms, Powder Room

Network & Telephone Cabling	
SMATV Points	Living, Master Bedroom
Telephone Points	Living, Master Bedroom
Data Points	Living, Master Bedroom

Security System	Card Access System (Carpark Barrier Gate, Lift Lobby, Lift Car)
	Video Intercom

Compressed marble may have possible variation due to the natural aggregates used for production which may result in slight colour variation.
Solid timber is a natural material containing grain and tonality differences. Thus, it is not possible to achieve total consistency of grain and colour in their selection and installation.

规格

结构	钢筋混凝土/剪力墙系统
墙壁	普通砖/钢筋混凝土/剪力墙式屋顶
屋顶	铺石板
天花板	纤维石膏天花板/ 粉灰层
窗口	粉末涂层铝框玻璃面板

门	
主入口	防火实木门
其他	木门、推拉式木门

五金器具	高质量锁具
墙饰面	
客厅、餐厅、厨房、干厨房、所有卧室、书房、储藏室、湿厨房	石膏、粉灰层和乳胶漆
所有浴室、化妆间	至天花板高的斑点瓷砖 至天花板高的压缩大理石

地板饰面	
客厅、餐厅、厨房、干厨房、所有浴室、化妆间、储藏室	压缩大理石
所有卧室、书房	实木条
湿厨房	斑点瓷砖

卫浴用品与配件	
厨房、干厨房、湿厨房	具完整水龙头配件的水槽
主浴室	洗脸盆、沐浴系统、手持花洒、浴缸和卫生间
浴室1、浴室2、浴室3	洗脸盆、手持花洒和卫生间
化妆间	洗脸盆和卫生间

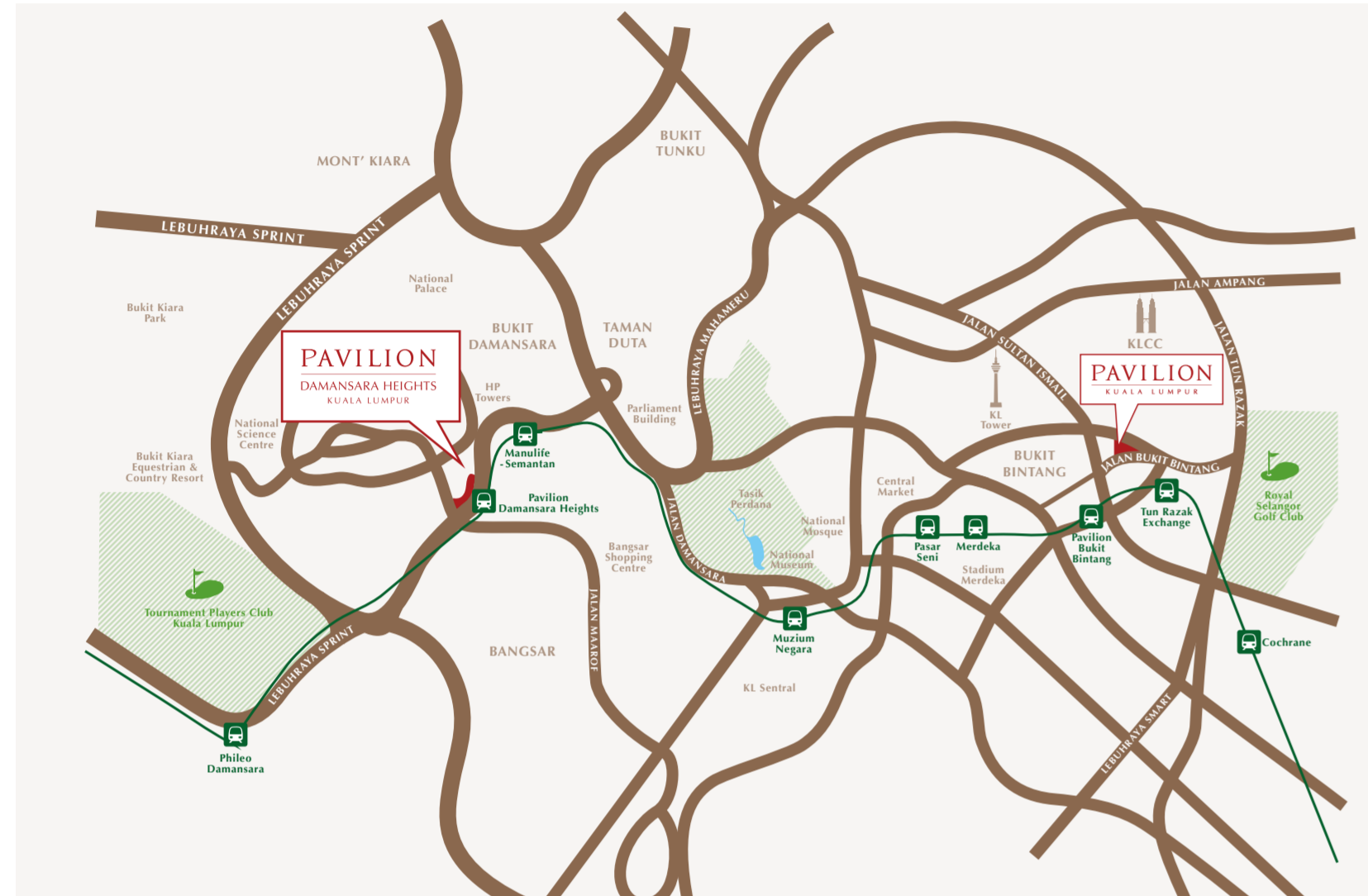
机电安装	
电插座	照明及电源点将根据机电工程师的规格来安装与提供
可个人控制的中央冷水空调	
- D1, D2, D3, D4, D5, E1房型	客厅与餐厅、所有卧室、书房
- E2, E2a, F1, F2, F2a, F3房型	客厅、餐厅、所有卧室、书房
热水供应	厨房、湿厨房、所有卧室、化妆间

网络与电话布线	
单天线电视插座	客厅、主卧室
电话插座	客厅、主卧室
数据插座	客厅、主卧室

保安系统	门卡管制系统 (停车场关闭、大堂电梯、停车场电梯)
	视频对讲装置

由于压缩大理石的原料为天然资源，因此大理石的表面颜色可能会有轻微差异
实木是一种含有颗粒和色调差异的天然材料。因此，在选择和安装时不可能实现完全一致的木纹和颜色。

LOCATION MAP 位置图



MRT STATIONS 捷运站

- Seamlessly connected to Pavilion Damansara Heights MRT Station
无缝连接柏威年白沙罗岭捷运站
- Less than 400m to Manulife-Semantan MRT Station
距离宏利-士曼丹捷运站仅400公尺

TRANSPORTATION HUB & AIRPORT 交通枢纽与机场

- The gateway to Kuala Lumpur International Airport (KLIA & KLIA2) via the KLIA Ekspres Line from KL Sentral
从吉隆坡中环广场直达吉隆坡国际机场(KLIA & KLIA2)只需乘搭 KLIA Ekspres 机场快铁
- Direct line to Central Business District (CBD) and the upcoming Tun Razak Exchange (TRX)
直达中央商务区(CBD)及即将完成的敦拉萨国际贸易中心

03 2011 8086 Pavilion Damansara Heights Property Gallery: 柏威年白沙罗岭产业展销厅:
011 2028 2882 Lot 480023, Jalan Beringin, Bukit Damansara, 50490 Kuala Lumpur.
www.PavilionDamansaraHeights.com

Exclusive Property Marketing Consultant: 1 Pavilion Property Consultancy Sdn Bhd (928503-A)
Developer: Impian Ekspresi Sdn Bhd (513545-W)
独家产业营销顾问: 1 Pavilion Property Consultancy Sdn Bhd (928503-A)
发展商: Impian Ekspresi Sdn Bhd (513545-W)

1 PAVILION
Exclusive Property Marketing Consultant

Developer License: 19224-1/11-2019/0980 (L) • Validity Period: 23 November 2017 - 22 November 2019 • Advertising & Sales Permit: 19224-1/11-2019/0980 (P) • Validity Period: 23 November 2017 - 22 November 2019 • Approving Authority: Dewan Bandaraya Kuala Lumpur • Building Plan No: OSC BP 12 OSC 2016 1760 • Land Tenure: Freehold • Expected Completion: November 2022 • Land Encumbrances: Maybank Investment Bank Berhad • Type of Property: Service Apartments • Development Name: Pavilion Damansara Heights • Car Park: 1,866 • Built-up: 695 - 10,058 sq. ft. • Total Units: 1,314 • Selling Price: RM 1,022,000 (Min) - RM 23,760,000 (Max) • Bumiputera Discount: 5%

All renderings contained in this brochure are artist's impressions only. The developer reserves the right to modify any part or parts of the building, development and/or any unit prior to completion as directed or approved by the architects and/or the relevant authorities. While every reasonable care has been taken in preparing this brochure, the developer cannot be held responsible for any inaccuracies in its contents. This brochure is intended for internal circulation only.

